



**California's
Changing
Climate**

**Jim Thorne, UC Davis
Dept Env. Science and Policy
jhthorne@ucdavis.edu
(530) 752-4389
2/25/2020**

Outline

- **Climate Models, Emissions Levels and Climate Exposure**
- **State and Regional climate trends and projections**
- **Role of climate science in decision making**

Climate Models, Emissions Levels and Climate Exposure

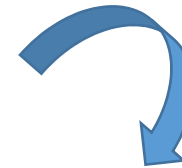
IPCC Reviews the science and trends



Global Climate Modeling Groups Model



People Downscale GCMs

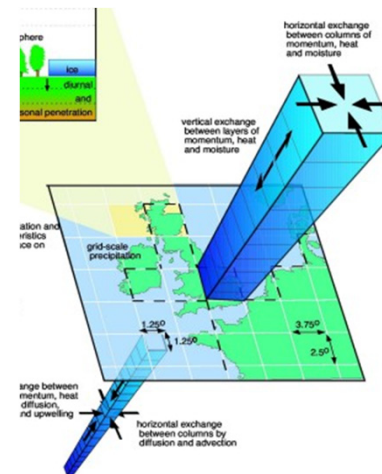
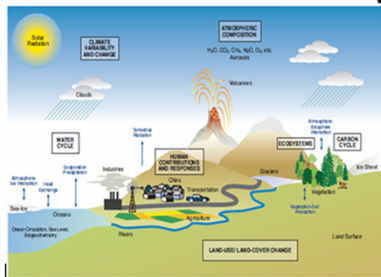
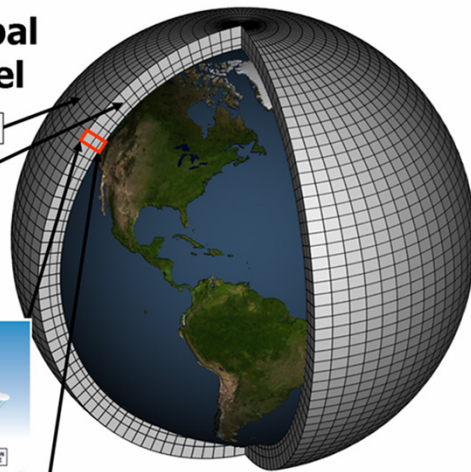


Governments and People Use for Planning and Action

Schematic for Global Atmospheric Model

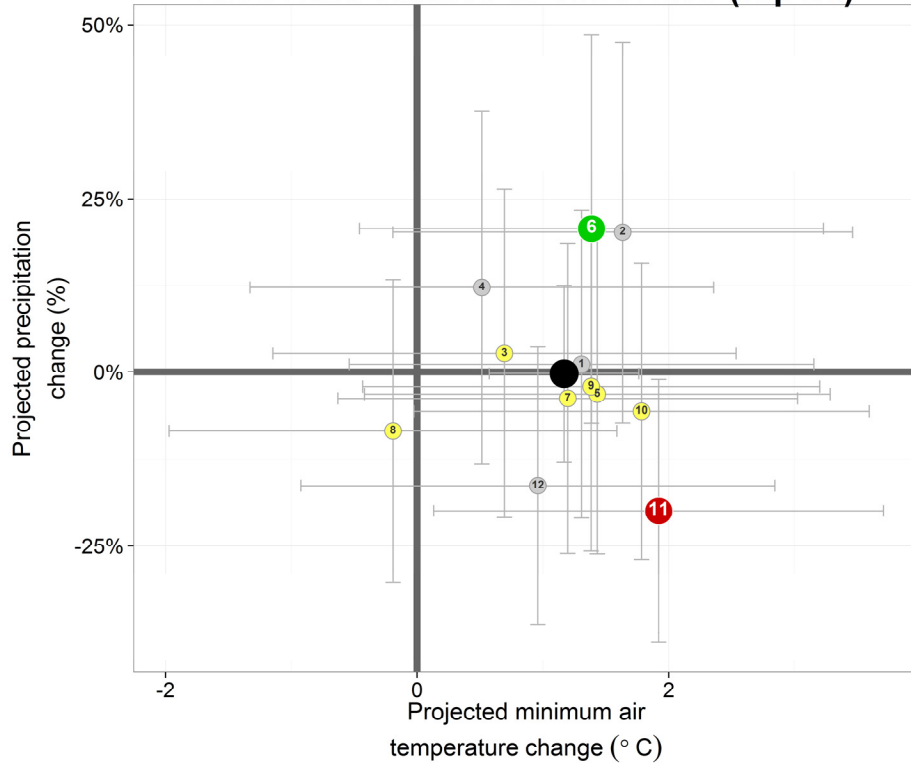
Horizontal Grid (Latitude-Longitude)

Vertical Grid (Height or Pressure)

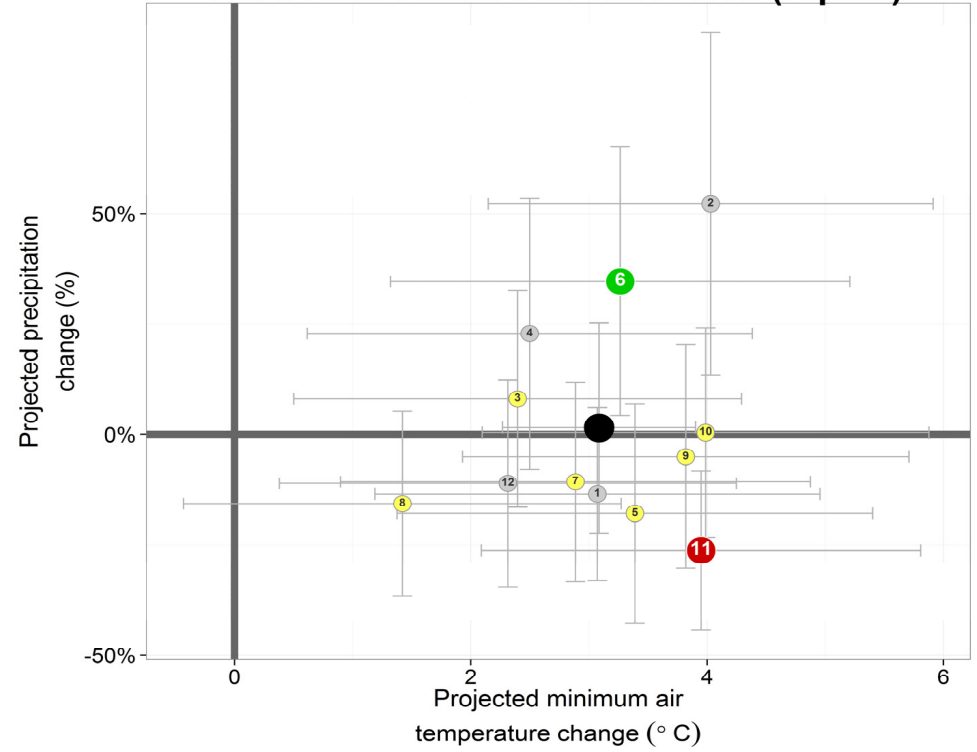


State-wide scan of climate change models projections for California

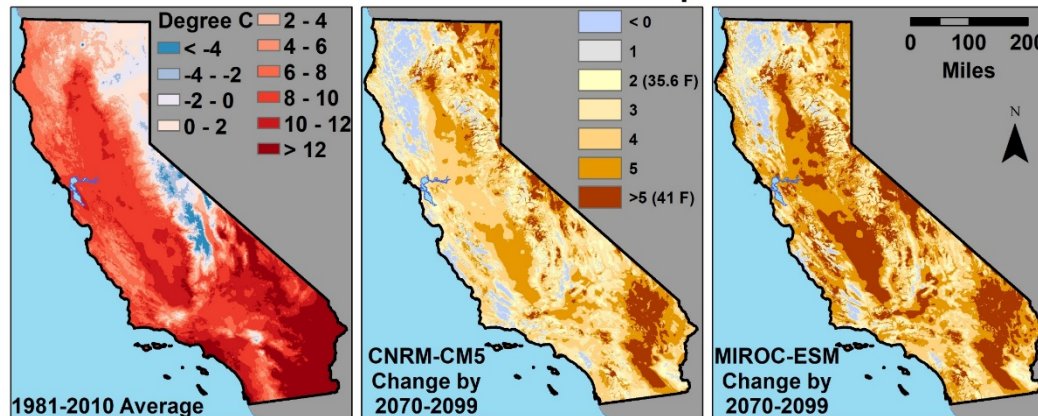
Climate Change Projections for California
2070-2099 relative to 1981-2010 (rcp4.5)



Climate Change Projections for California
2070-2099 relative to 1981-2010 (rcp8.5)



Mean Annual Minimum Temperature



Average Temperature Warming in California

| | 2046-2065 | 2081-2100 |
|---------------------------------------|---------------------------------|---------------------------------|
| Scenario | Mean and <i>likely</i> range | Mean and <i>likely</i> range |
| RCP4.5 | 2.5 F (1.6 – 3.6) | 3.2 (2 – 4.7) |
| RCP8.5 (Current Rate of Emissions) | 3.6 F (2.5 – 4.7) | 6.6 F (4.4 to 8.2) |

Climate Change Definitions

Different ways to measure/project climate change

We can ask how will conditions shift, and where will current conditions persist?

Climate Velocity – the distance and speed that a set of climate conditions will move under projected futures.

Place-based Climatic Exposure – The level of change in climate conditions at a specific location.

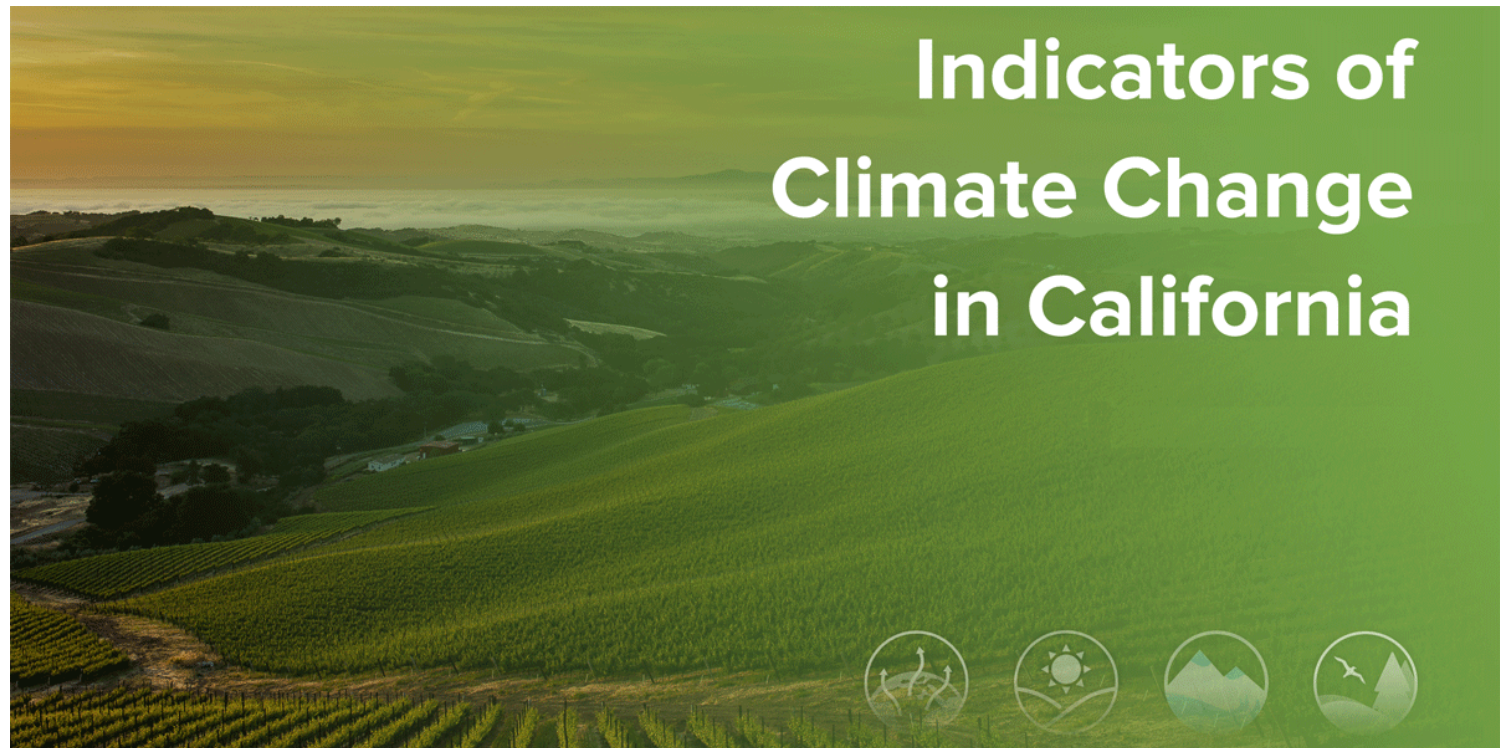
Climate Refugia – Locations that will retain tolerable climate conditions for a species or set of species.

Species Range Shifts – the distance that a species range may shift to remain in a set of climatic conditions. If the species can keep up, it may be able to track the velocity of climate change.

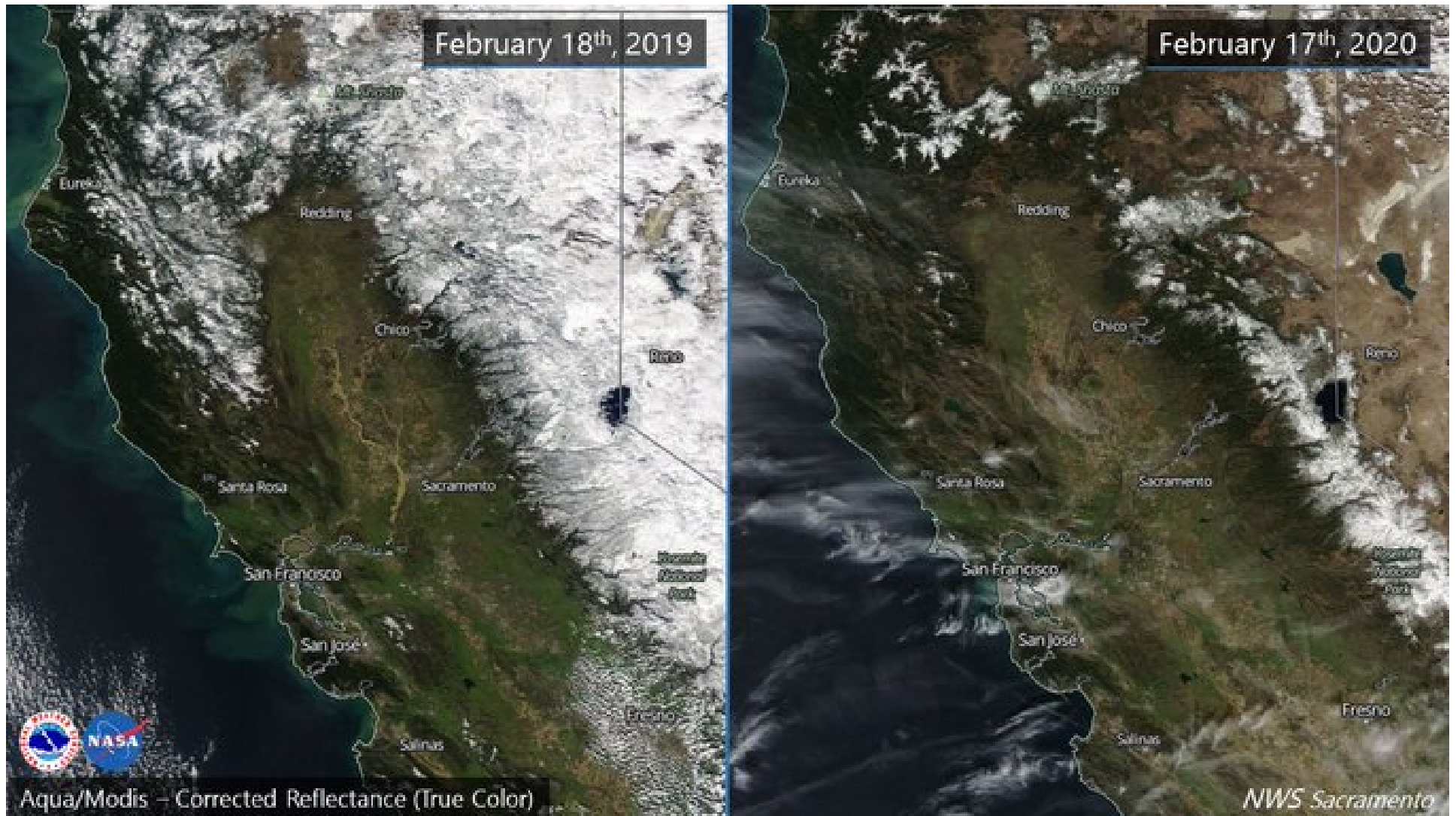
Other shifts – seasonality, soil moisture, suitable species

State and Regional climate trends and projections

Role of climate science in decision making

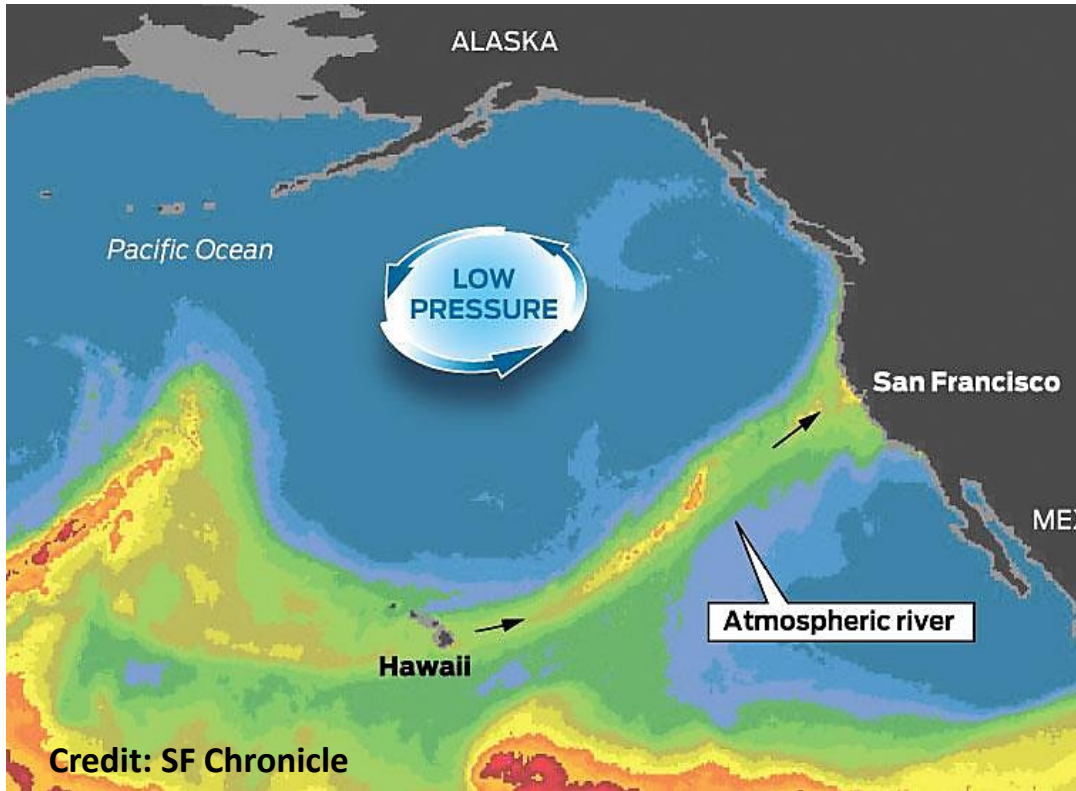


<https://oehha.ca.gov/climate-change/report/2018-report-indicators-climate-change-california>

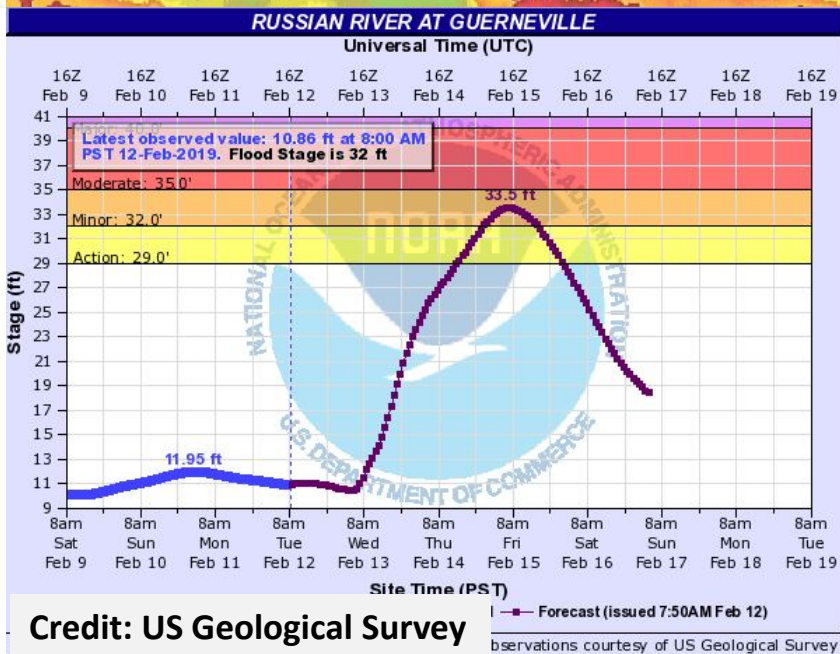


Climate Change is already impacting California's Ecosystems:

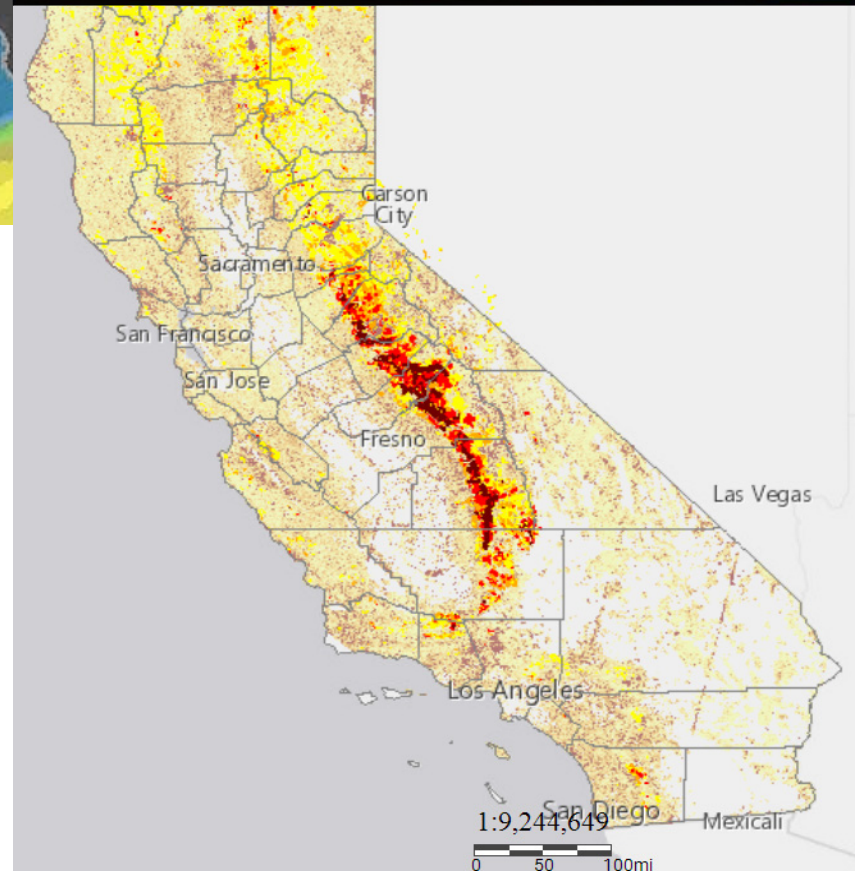
- Snowpack; Water – ground water extraction, algal blooms;
- Tree Mortality – Drought, beetle outbreaks; Coastal Ecosystems; Fire Frequency; Winds; Seasonality – ‘shoulder seasons’



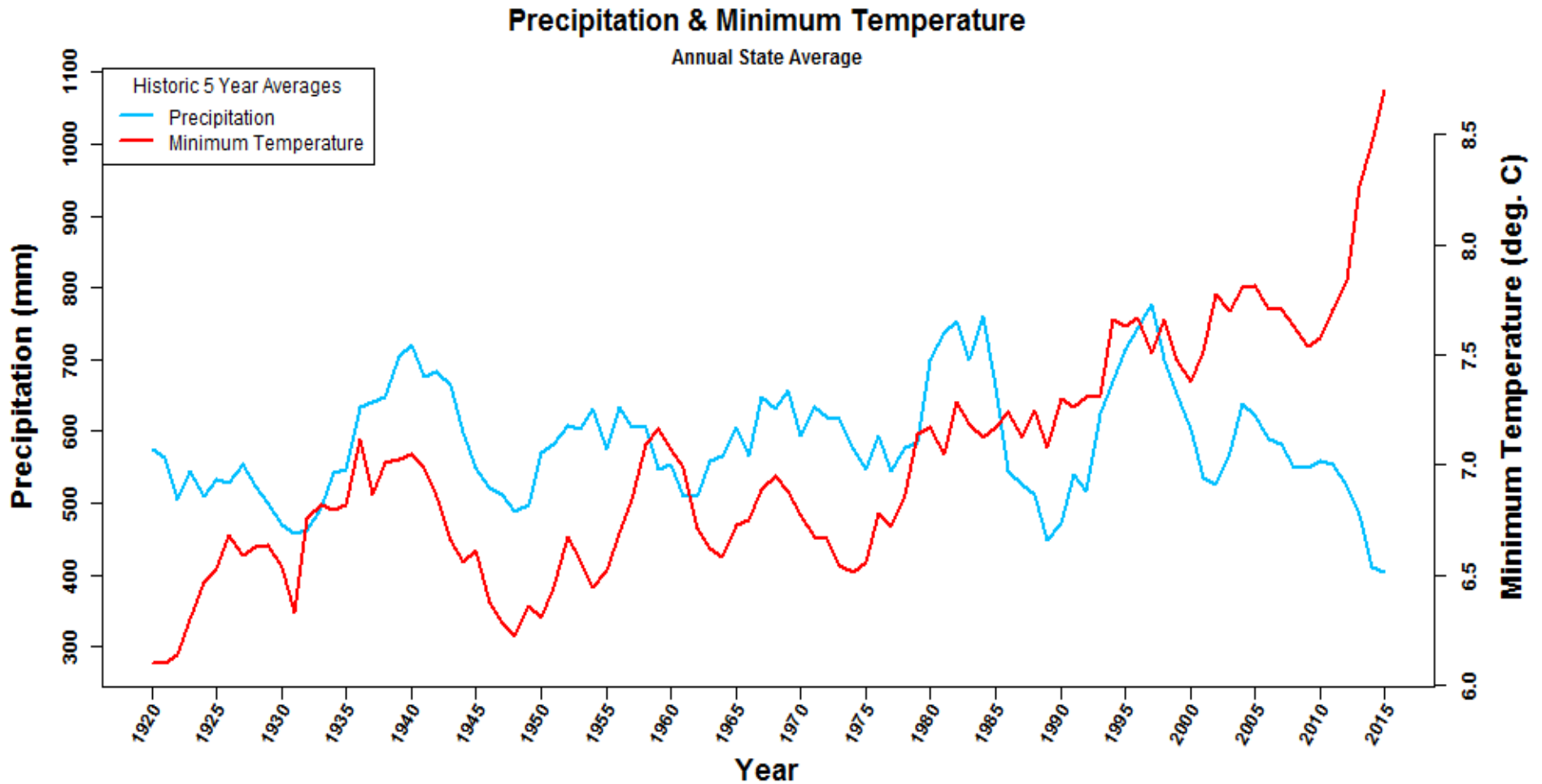
Credit: SF Chronicle



Credit: US Geological Survey



State and Regional climate trends and projections



Annual Average Precipitation and Temperature for California

Climate Change is also already impacting California's Infrastructure



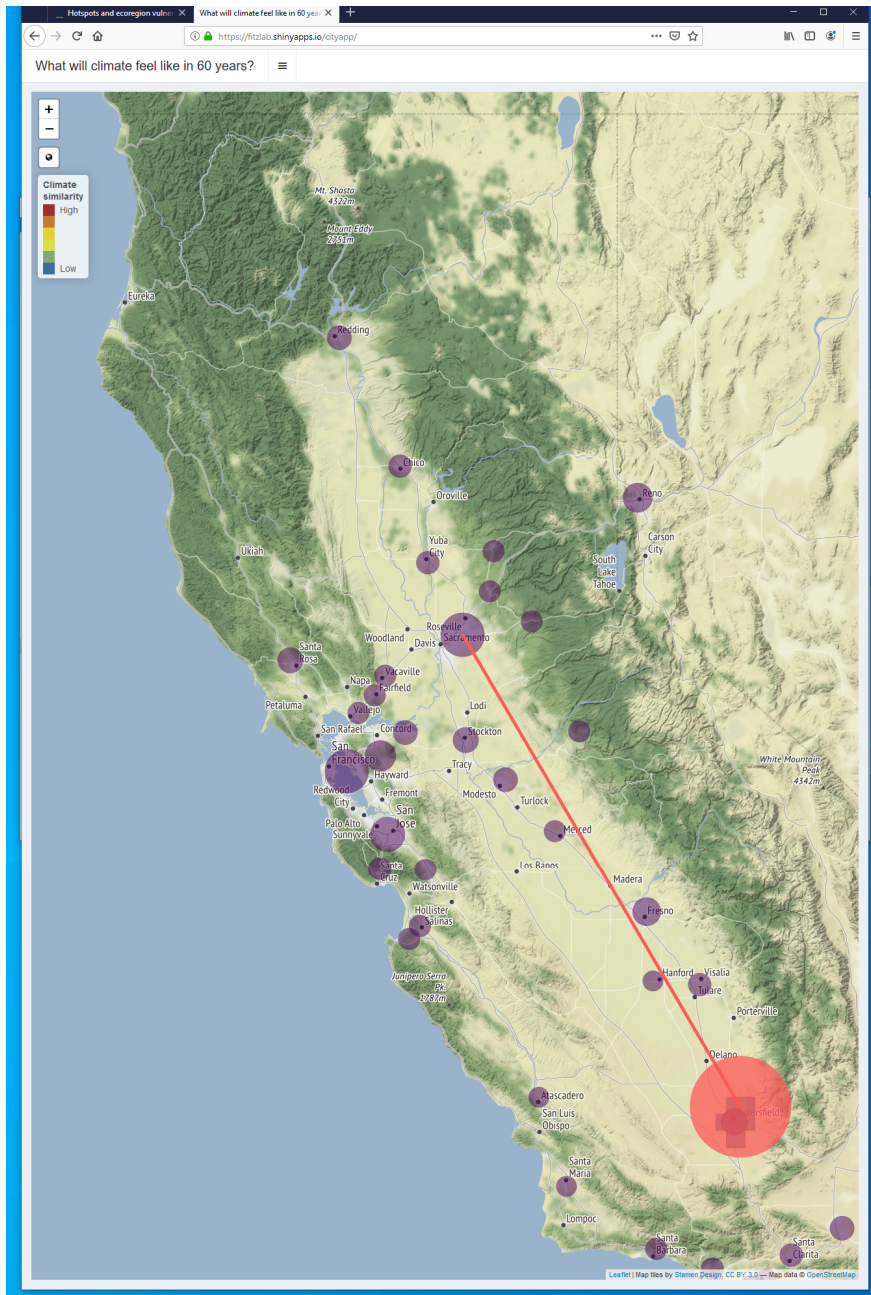
Oroville Dam \$ 1.1 Billion



Road repair post-wildfire \$ 500 M



Shutting of Electrical Power during windstorms - \$?

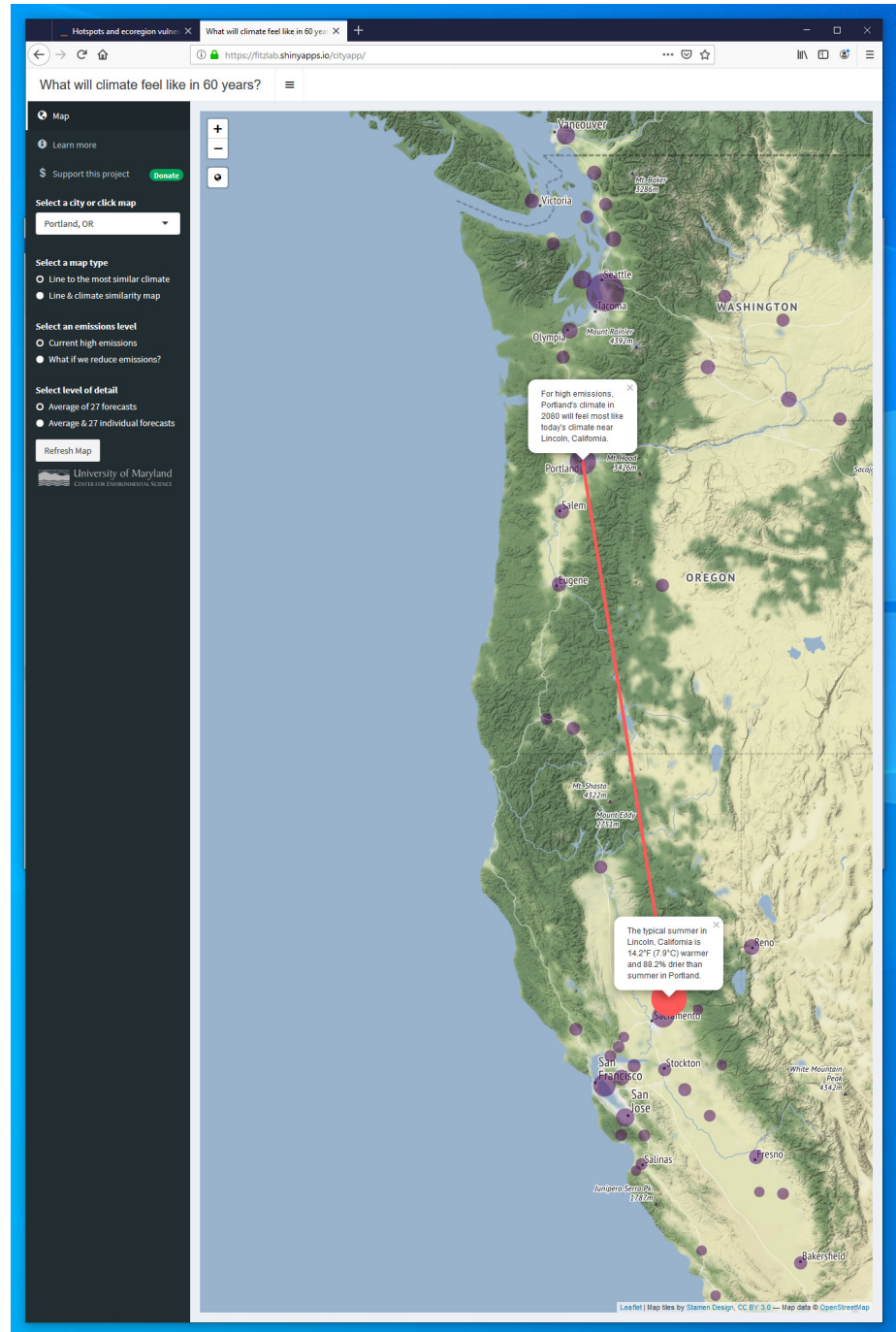


Arriving Climates - Davis will by like Bakersfield by 2080

Departing Climates -

Salem, OR will by like Sacramento
in 2080

<https://fitzlab.shinyapps.io/cityapp/>

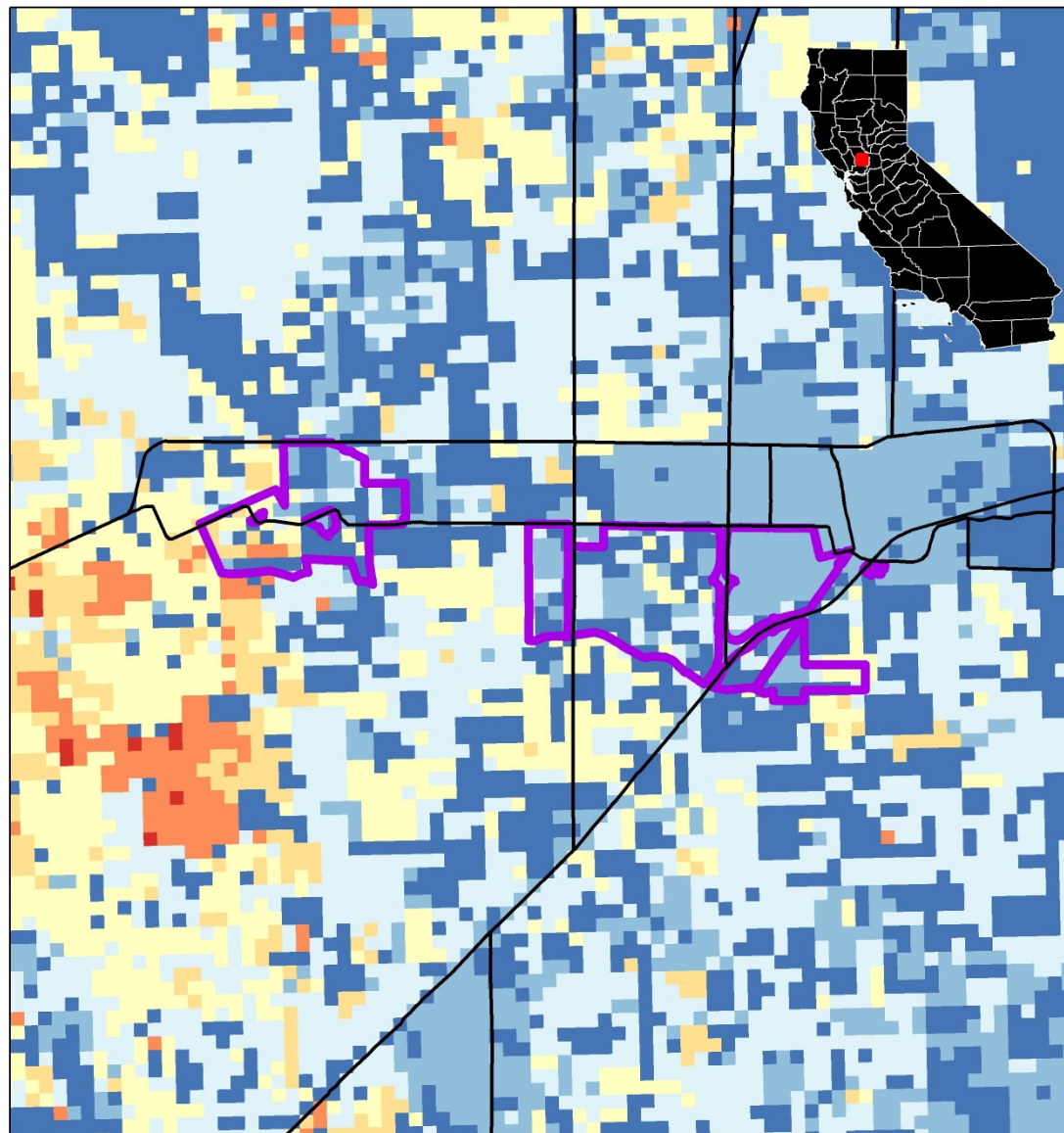



University of California, Davis - Main Campus

Climate Exposure – In-Place Measures

Campus climate exposure

1980-2010



Level of Exposure:  < 40% 40 - 60% 60 - 80% 80 - 90% 90-95% 95-99% 99-100% Non-Analog




 Major Road  Campus Boundary




Miles
0 1 2 4

Campus climate exposure

2010-2039

Level of Exposure:

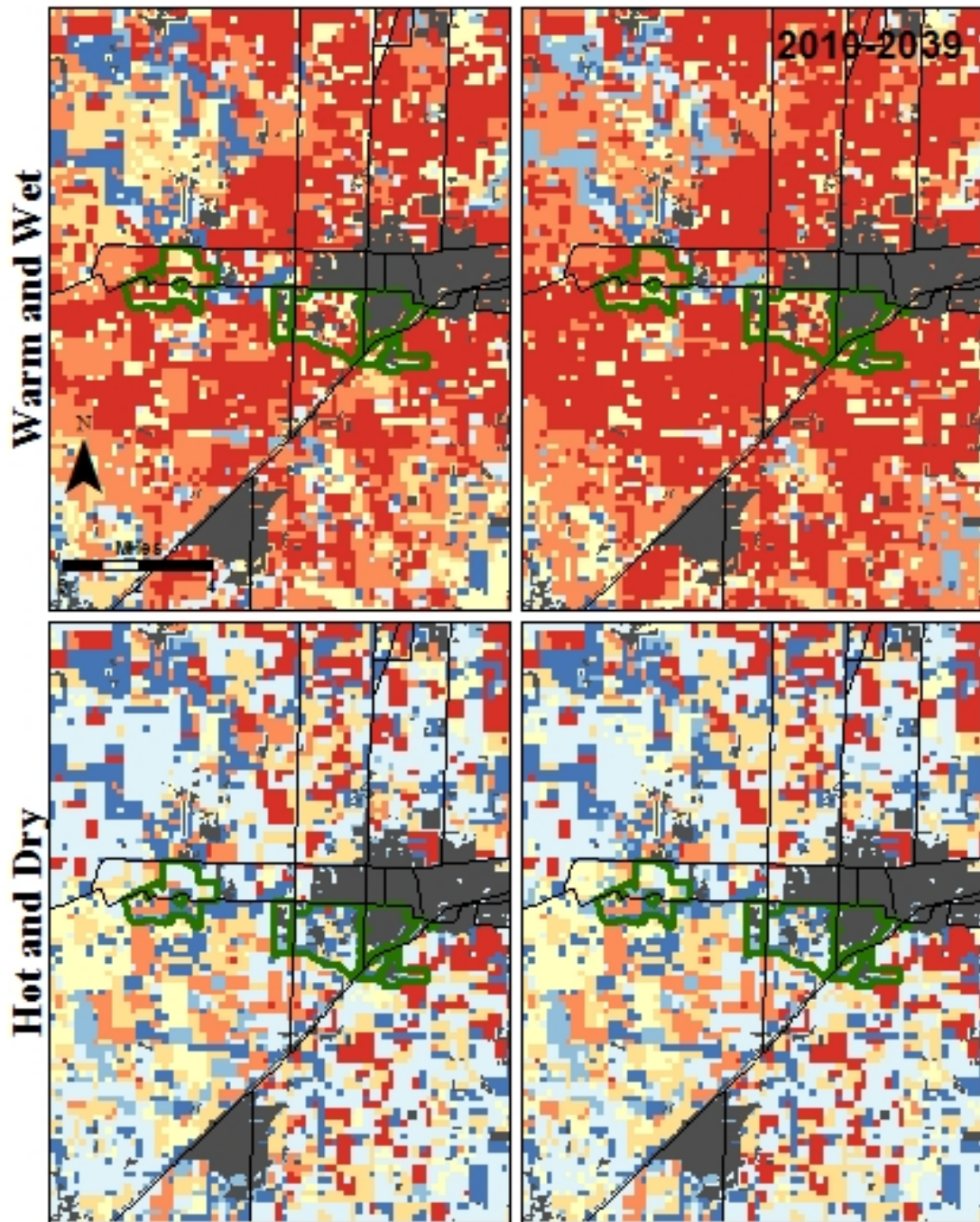
  
< 40% 40 - 60% 60 - 80%

  
90-95% 95-99% 99-100%


Non-Analog

Lower Emissions




Higher Emissions






Campus climate exposure

2040-2069

Level of Exposure:

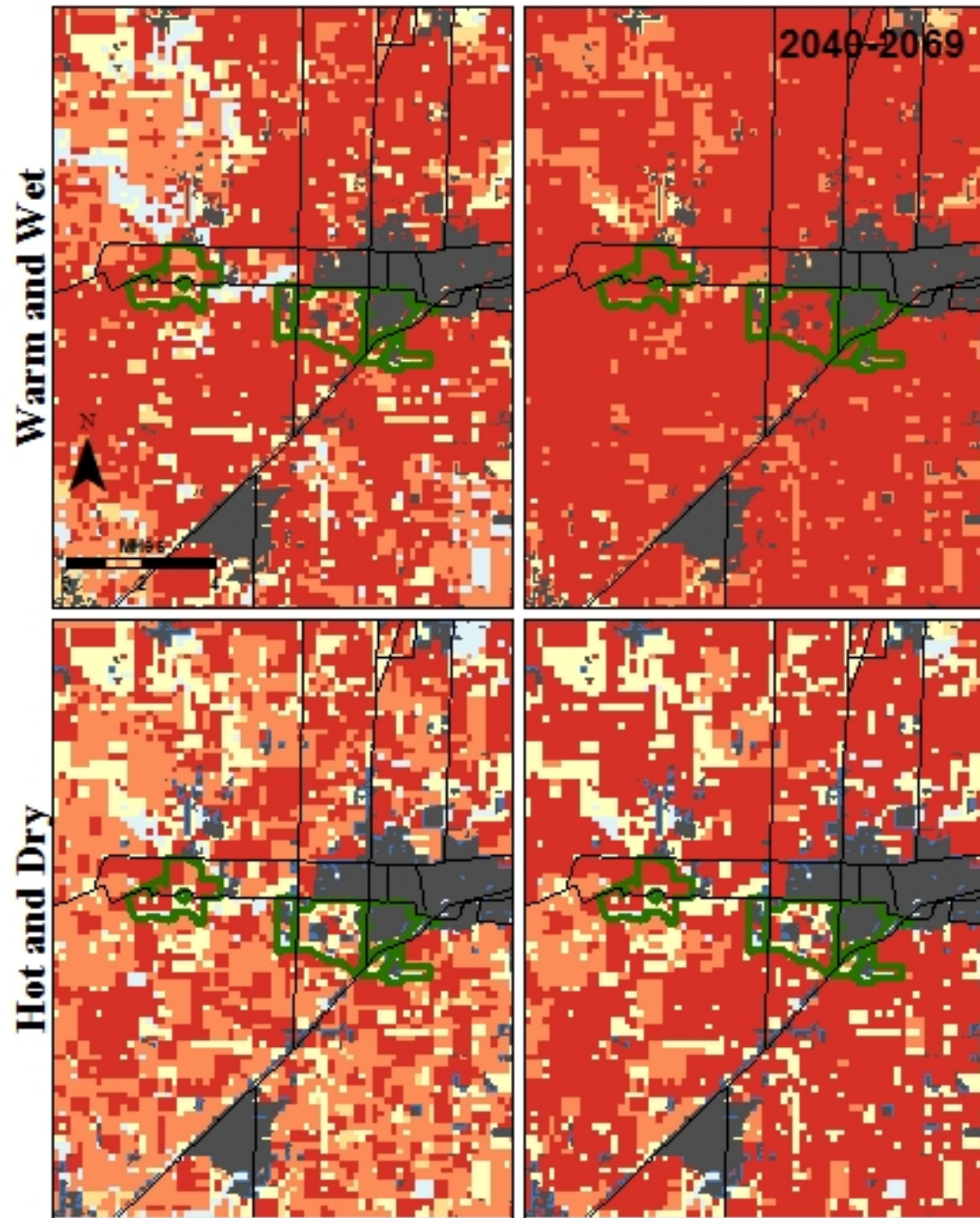
  
< 40% 40 - 60% 60 - 80%

  
90-95% 95-99% 99-100%


Non-Analog

Lower Emissions

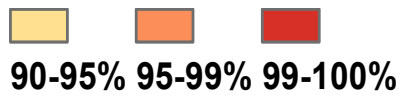
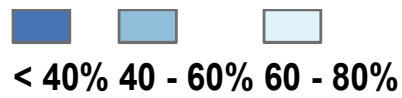
Higher Emissions



Campus climate exposure

2070-2099

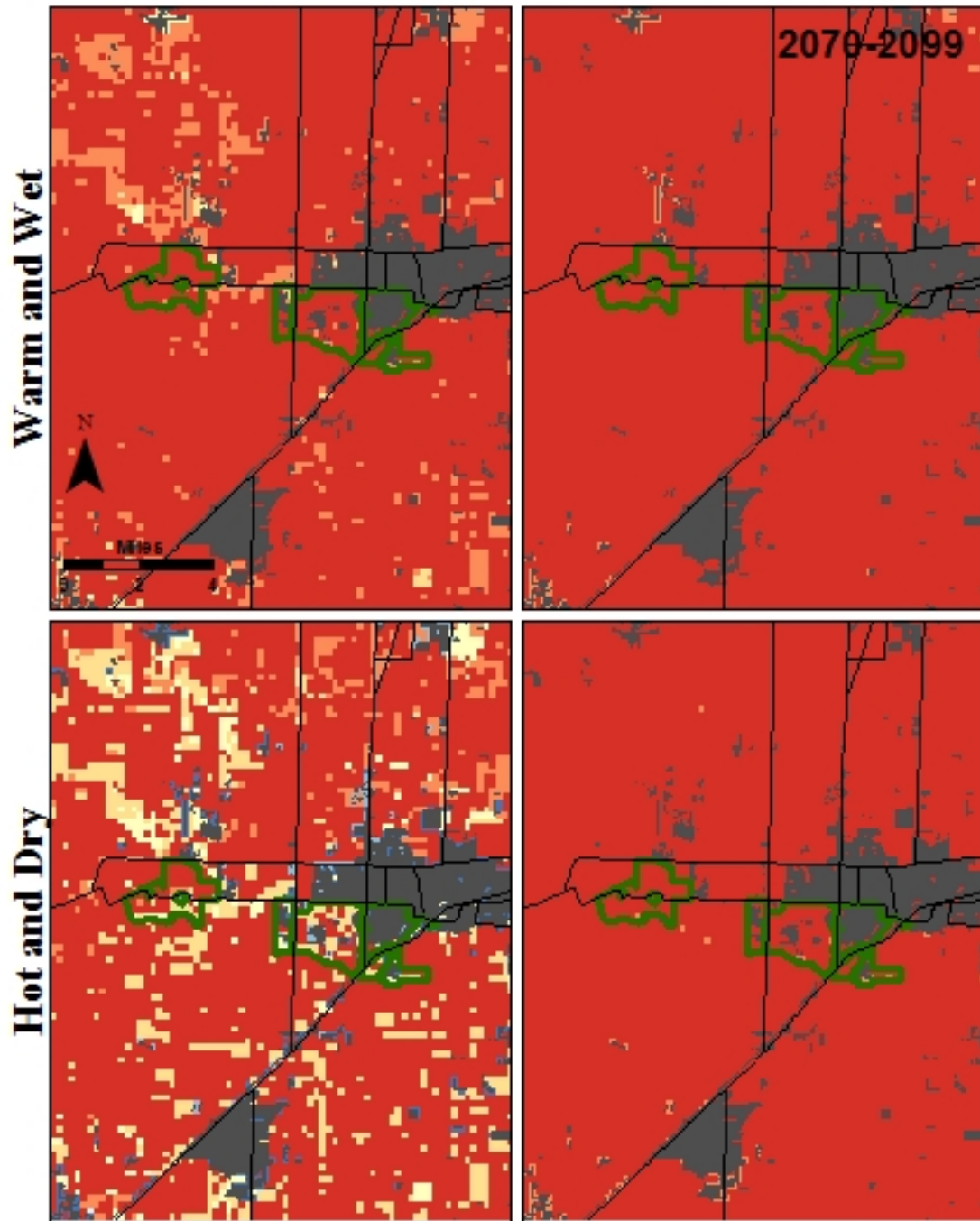
Level of Exposure:



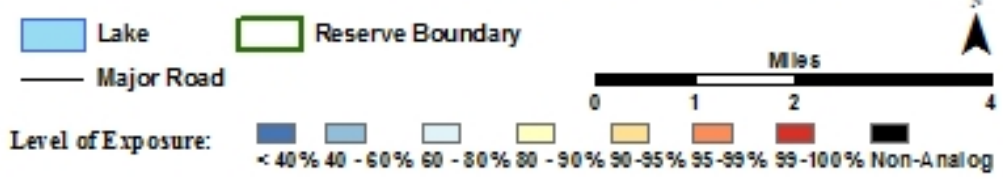
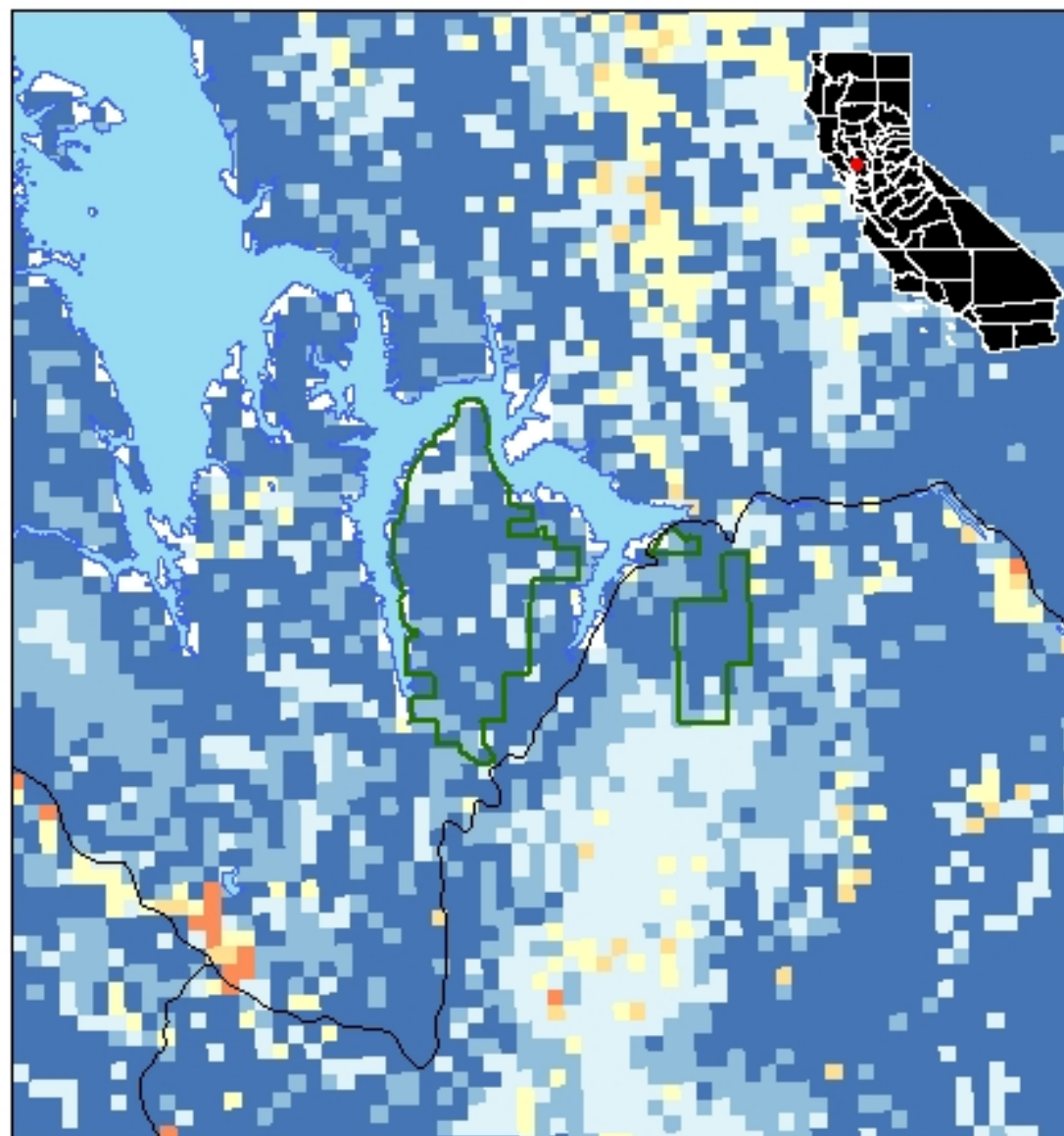
Non-Analog

Lower Emissions

Higher Emissions

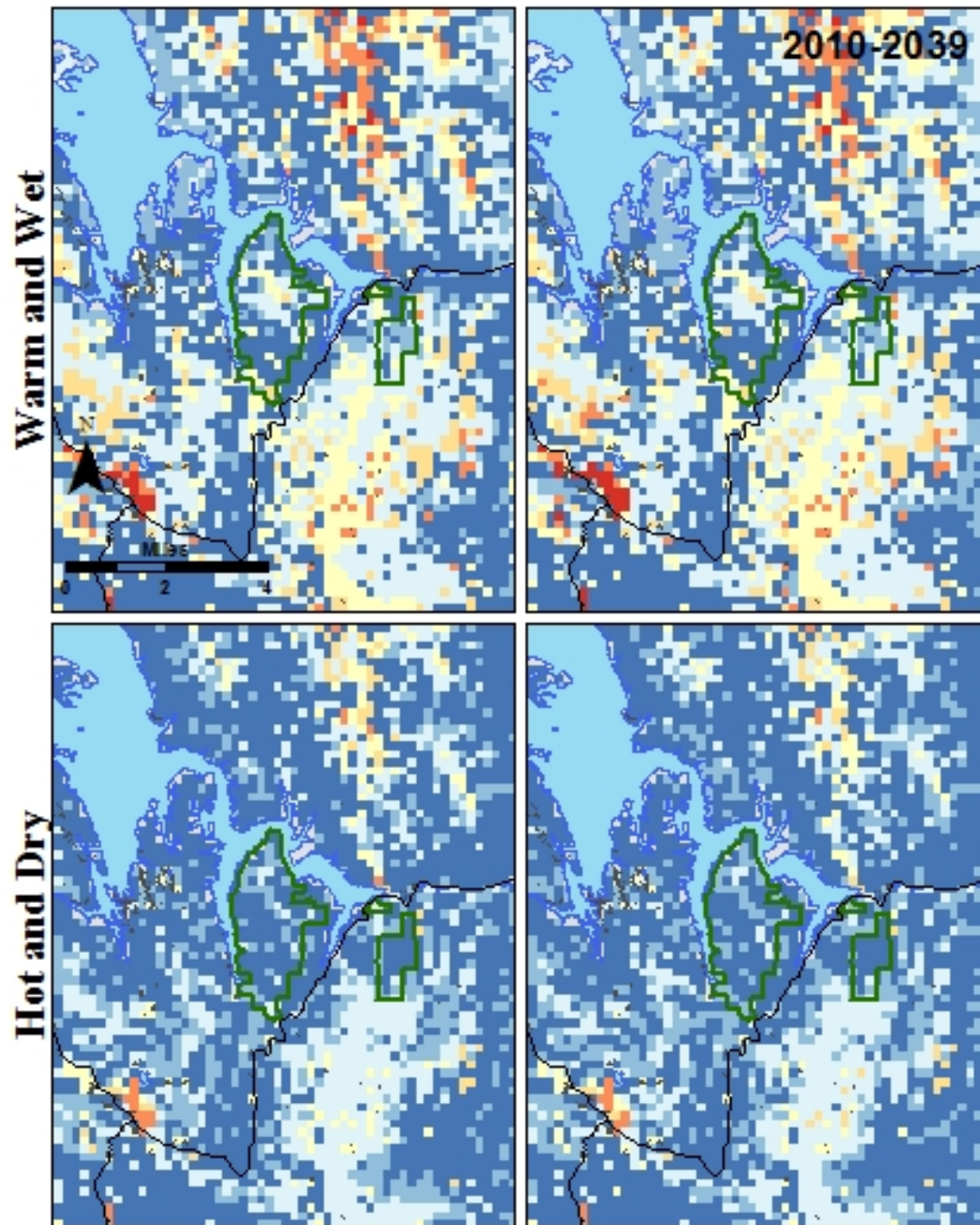


Quail Ridge and Stebbins Cold Canyon



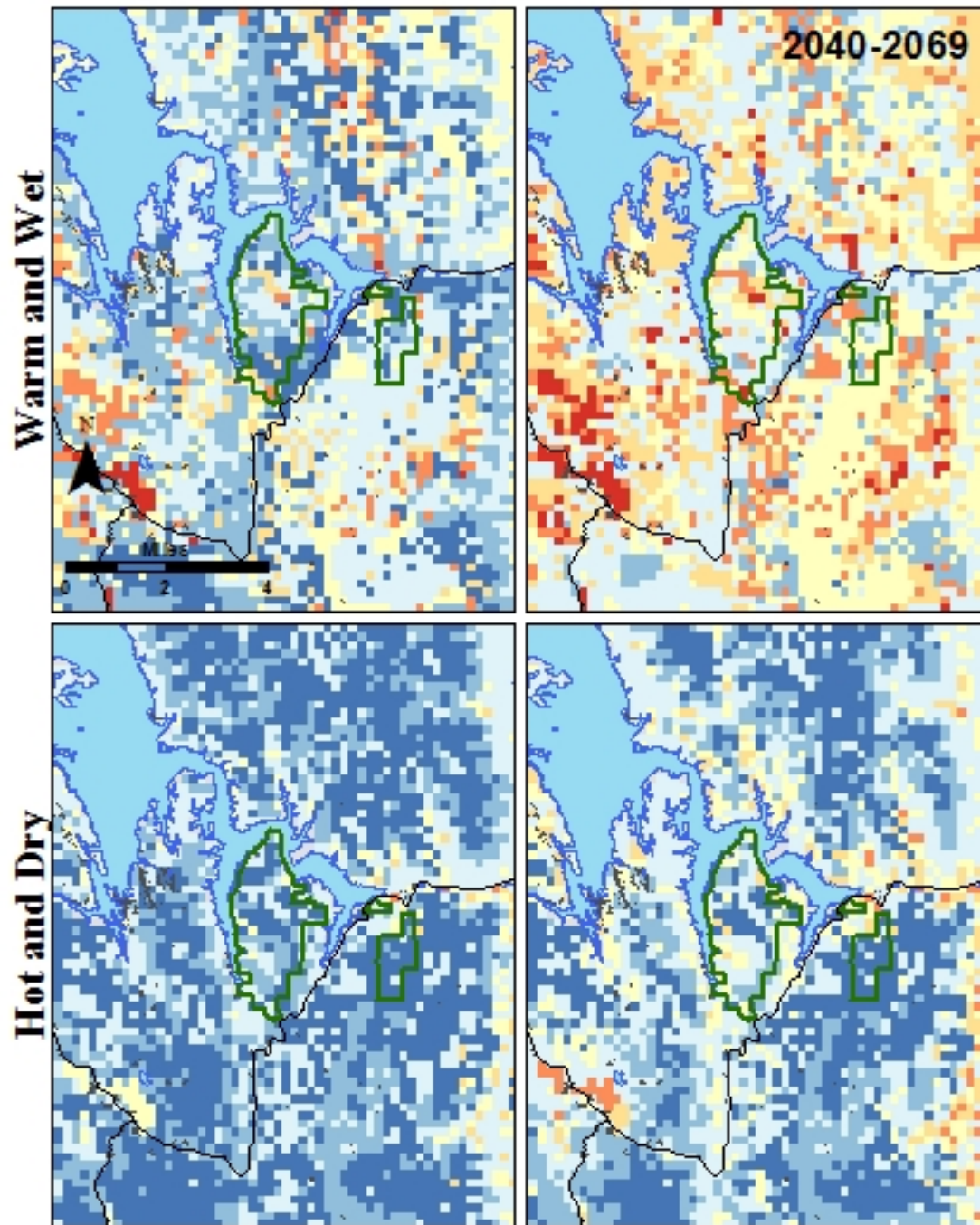
Lower Emissions

Higher Emissions



Lower Emissions

Higher Emissions



Climate Models, Emissions Levels and Exposure

State and Regional climate trends and projections

Role of climate science in decision making

Science can provide context

Climate Science can provide context across many sectors

So, how can it help inform campus land management?

A few questions CS could inform

What tree and shrub species to plant in anticipation?

Where can greenery provide shade to reduce solar exposure?

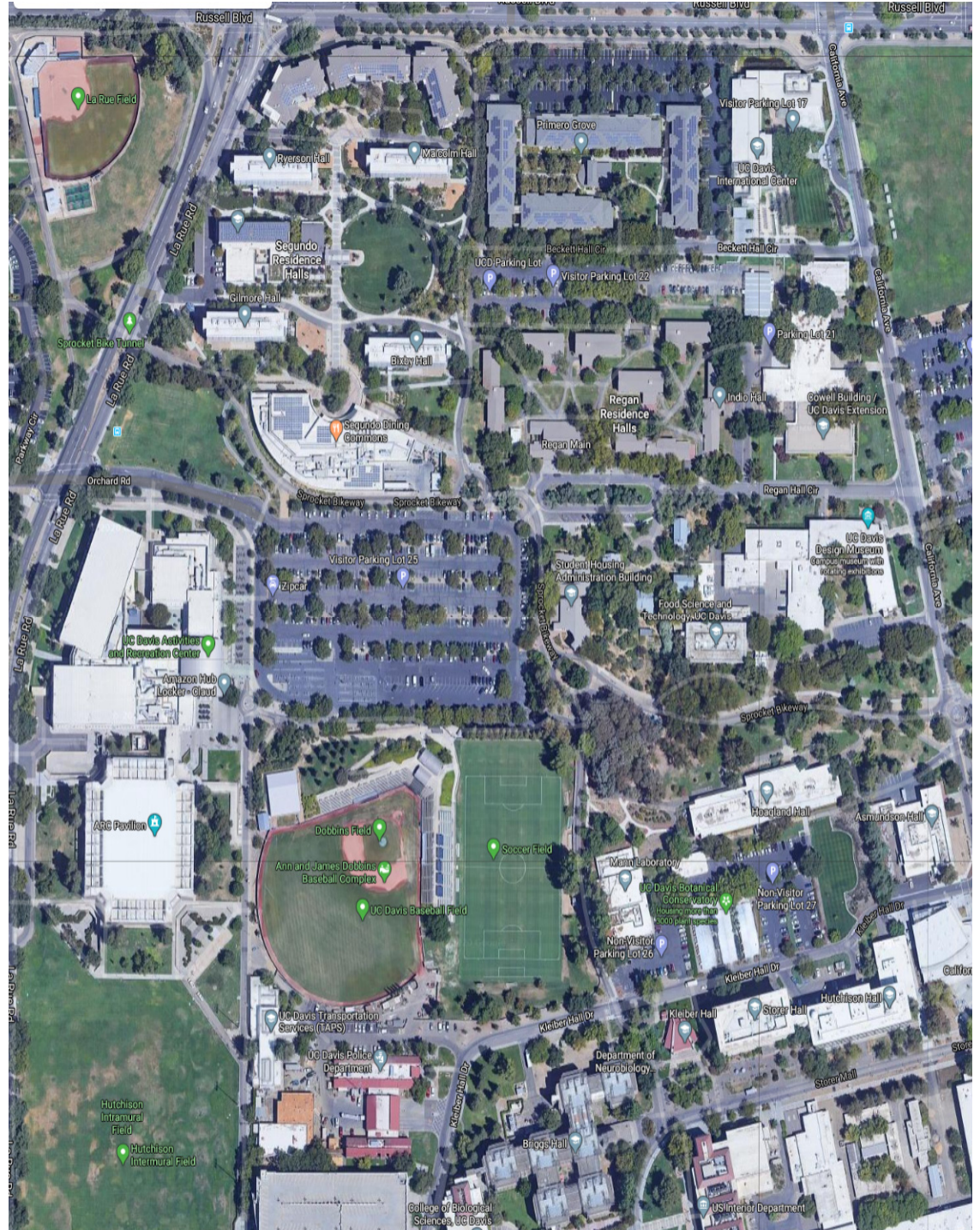
How do we maximize water retention and re-use?

How can we provide the best habitat for pollinators?

How can the campus become part of the landscape connections needed by species?

How can we provide a sustainable and comfortable environment for students?

How can we speed transition to a fossil fuels free future?



Climate-change impact as risk management

- Average Change vs Sudden Impacts

Adaptation & Mitigation vs Emergency
Response

- Components of Risk:
 - Exposure: who and where?
 - Hazard: how bad is the impact?
 - Vulnerability: who/what will be most affected?

Areas of Concern

Climate Science can help in developing actions for

Mitigation – lowering our consumption and emissions

How can the campus become carbon neutral?

Adaptation – How can we prepare for changes that are coming

What landscape actions will improve climate resilience?

Extreme events – are often the tipping points that change the statu
quo

Is the campus ready for drought? What about fire & wind?

Exposure – the change in day-to-day conditions that people
experience

How can we improve the outside conditions for students?

Potential for Campus to practice adaptive management

California has been very active in leading science and climate change adaptation One CA-specific climate report was in 1989!



Safeguarding California Plan:
2018 Update
California's Climate Adaptation Strategy | January 2018



ABOUT OUR WORK RESOURCES DIGITAL SERVICES RULEMAKING NEWS



Sustainable Communities & Climate Protection Program [← BACK TO ALL PROGRAMS](#)

Sustainable Communities & Climate Protection Program

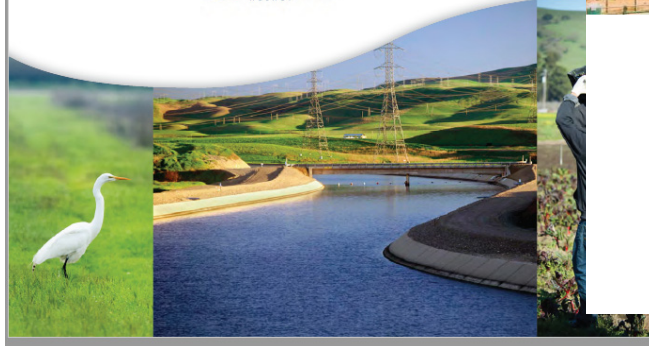
- About
- News
- Resources
- MPO RTP/SCS Schedule
- Sustainable Communities
- Regional Plans & Evaluations
- Regional Plan Targets
- Meetings & Workshops

ABOUT

The Sustainable Communities and Climate Protection Act (SB 375) supports the State's climate goals by helping reduce greenhouse gas emissions through coordinated transportation, housing, and land use planning.

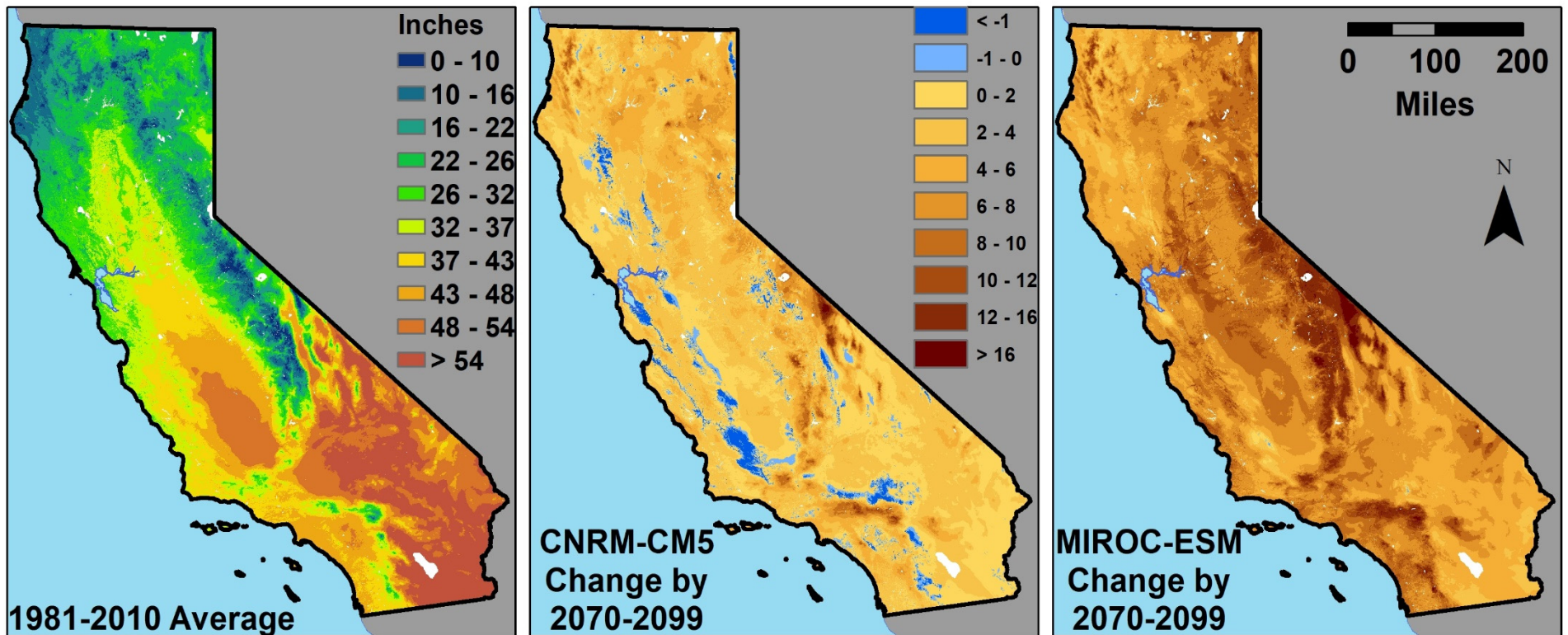
Under the Sustainable Communities Act, the California Air Resources Board (CARB) sets regional targets for greenhouse gas emissions reductions from passenger vehicle use. CARB set targets for 2020 and 2035 for each of the 18 metropolitan planning organization regions in 2010, and updated them in 2018.

Each of the regions must prepare a Sustainable Communities Strategy (SCS), as an integral part of its regional transportation plan, that contains land use, housing, and transportation strategies that, if implemented, would allow the region to meet CARB's targets. Once the SCS is adopted by the MPO, CARB must review the adopted SCS to



Map-based products include climate + hydrology models such as plant water stress

Mean Annual Climatic Water Deficit



**We can learn from reforestation efforts –
Mangers face the question of ‘What to plant?’**

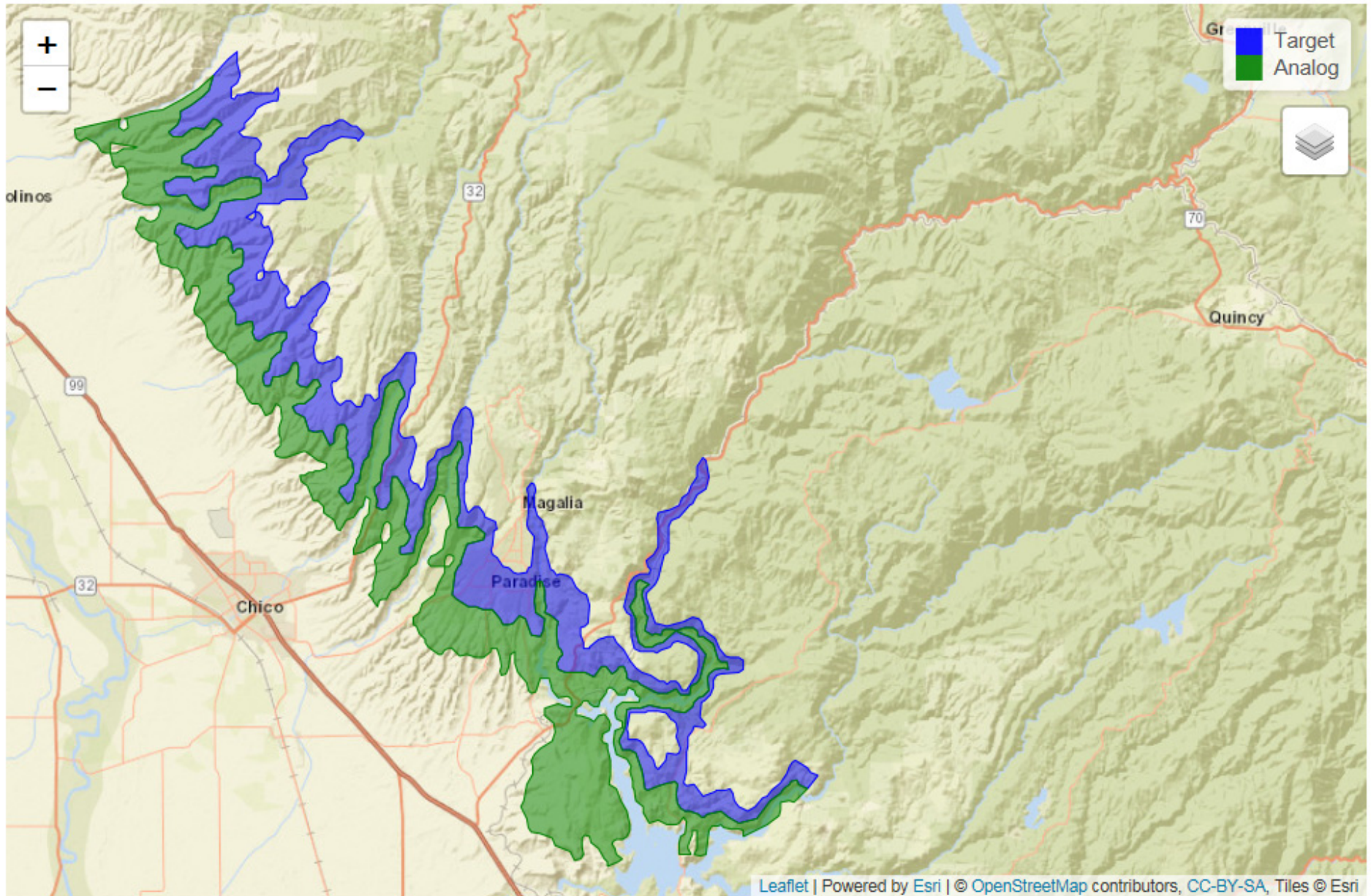
Species Mix

Density of planting

Genetic Source of individuals



Seed sourcing





Thank you!



jhthorne@ucdavis.edu

